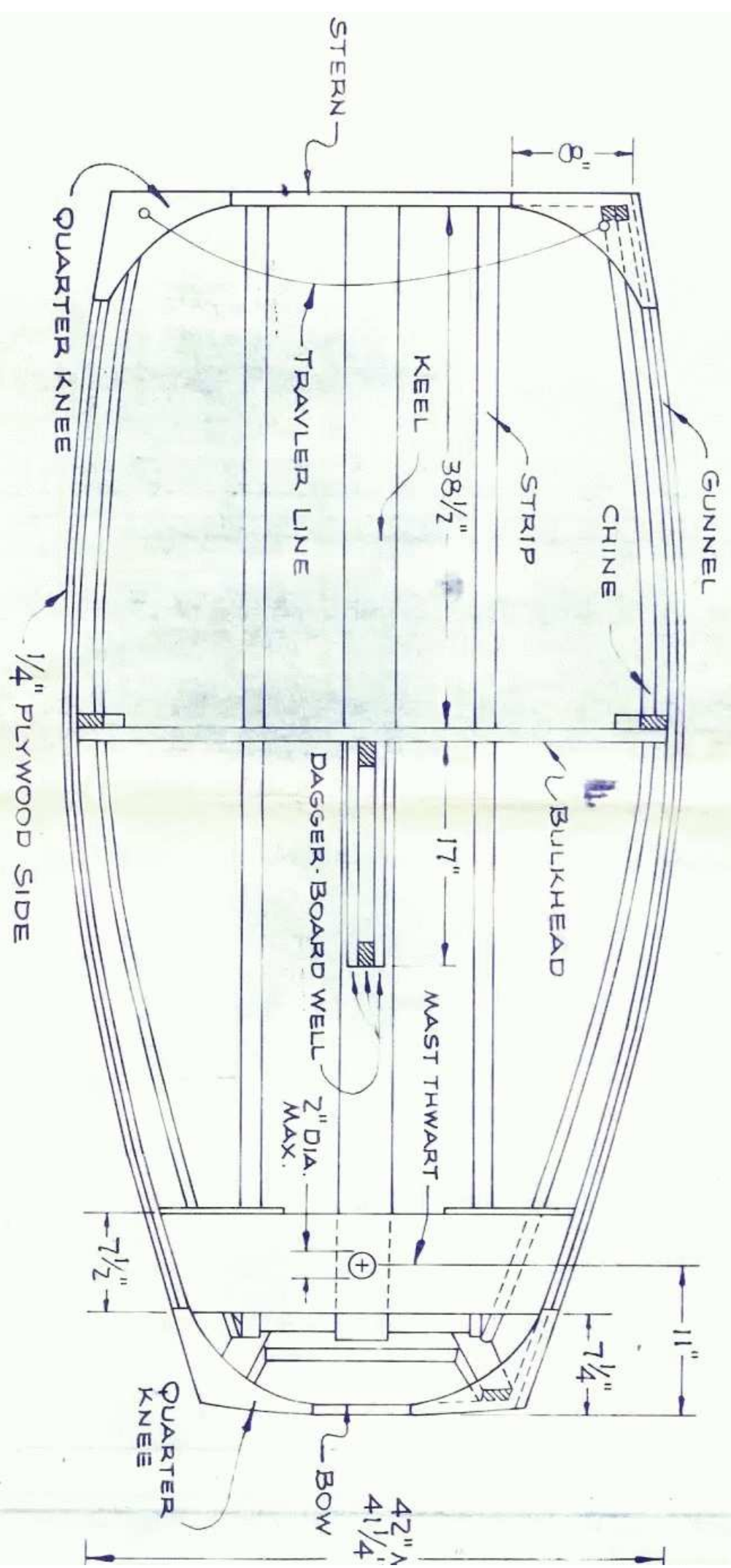


**FIG. 3 - SIDE VIEW SHOWING PLACEMENT OF STERN BULKHEAD & BOW.**



**FIG. 4 - TOP VIEW**

SKETCH  
DAG

SKETCH E

MAST THWART, MAST STEP  
AND QUARTER KNEE DETAIL.

THWART MAY HAVE  
EXTRA BLOCK ON TOP  
FOR MAST RAKE  
ADJUSTMENT, BUT  
MUST NOT BE ADJUSTABLE  
UNDER WAY.

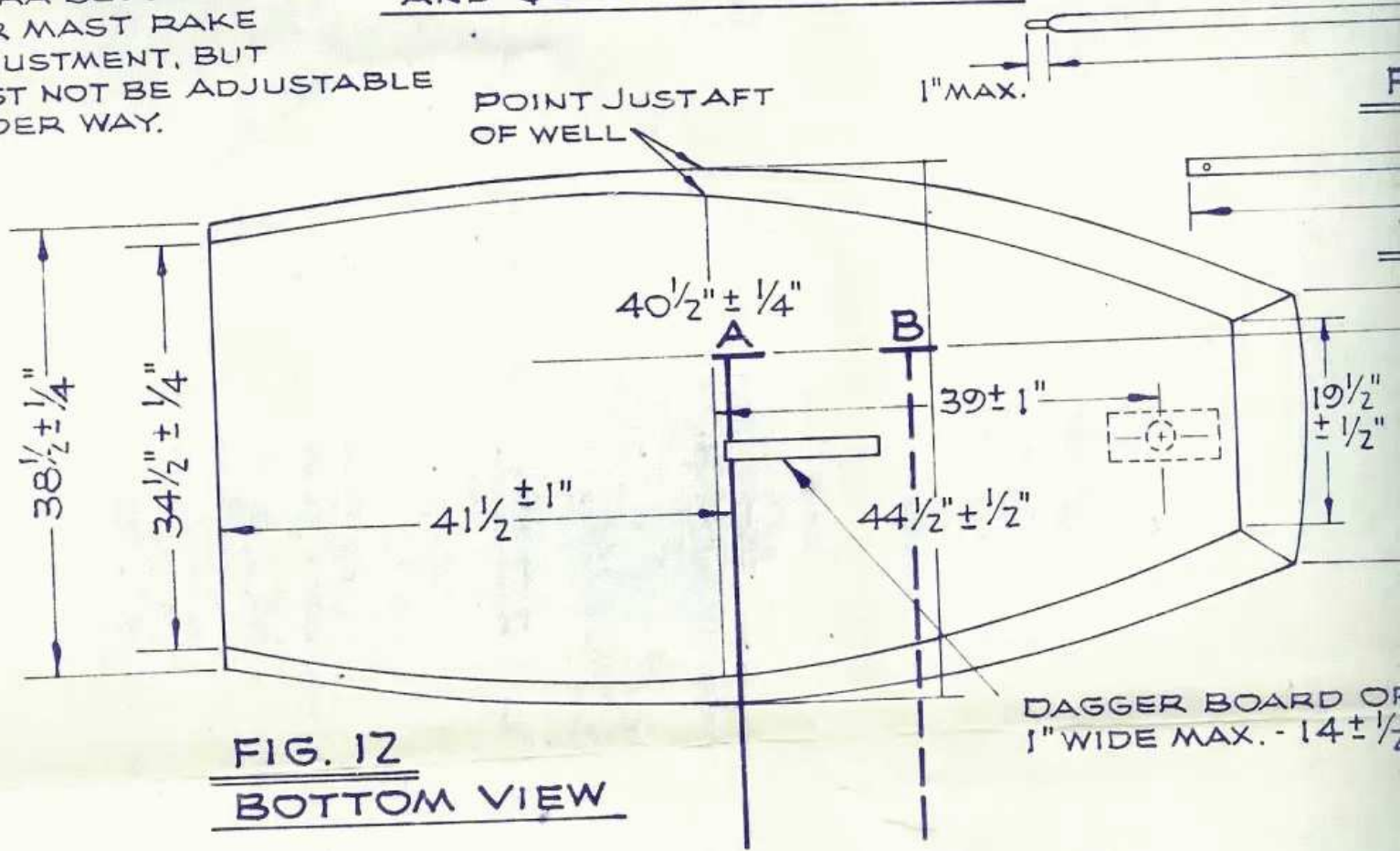


FIG. 12  
BOTTOM VIEW

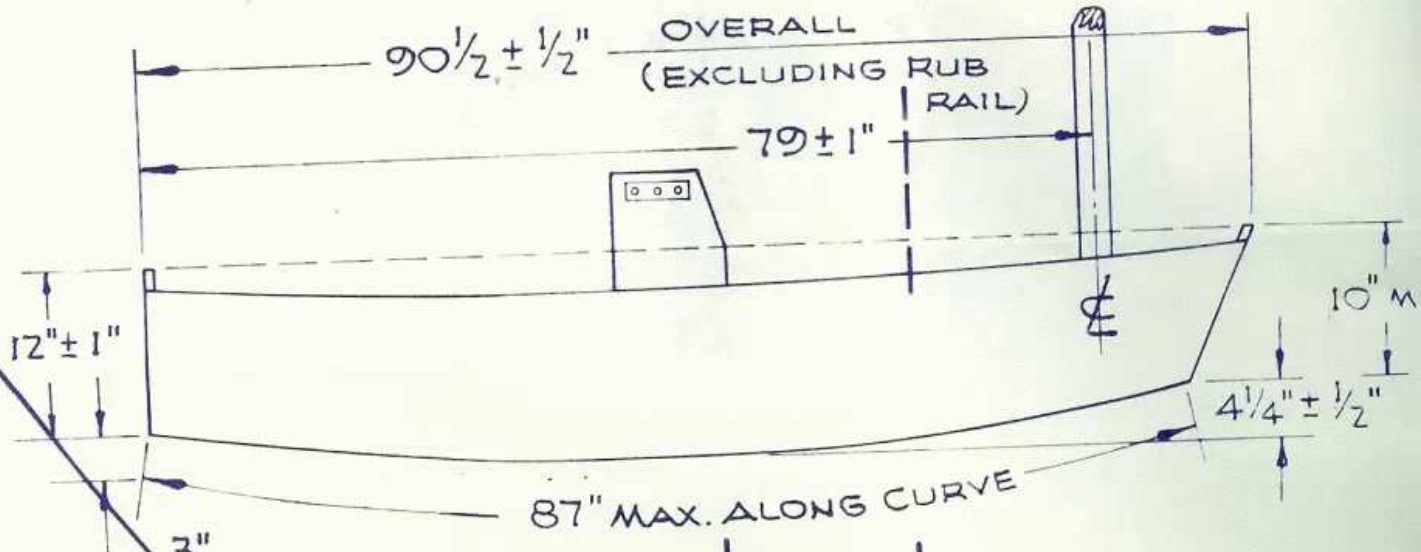
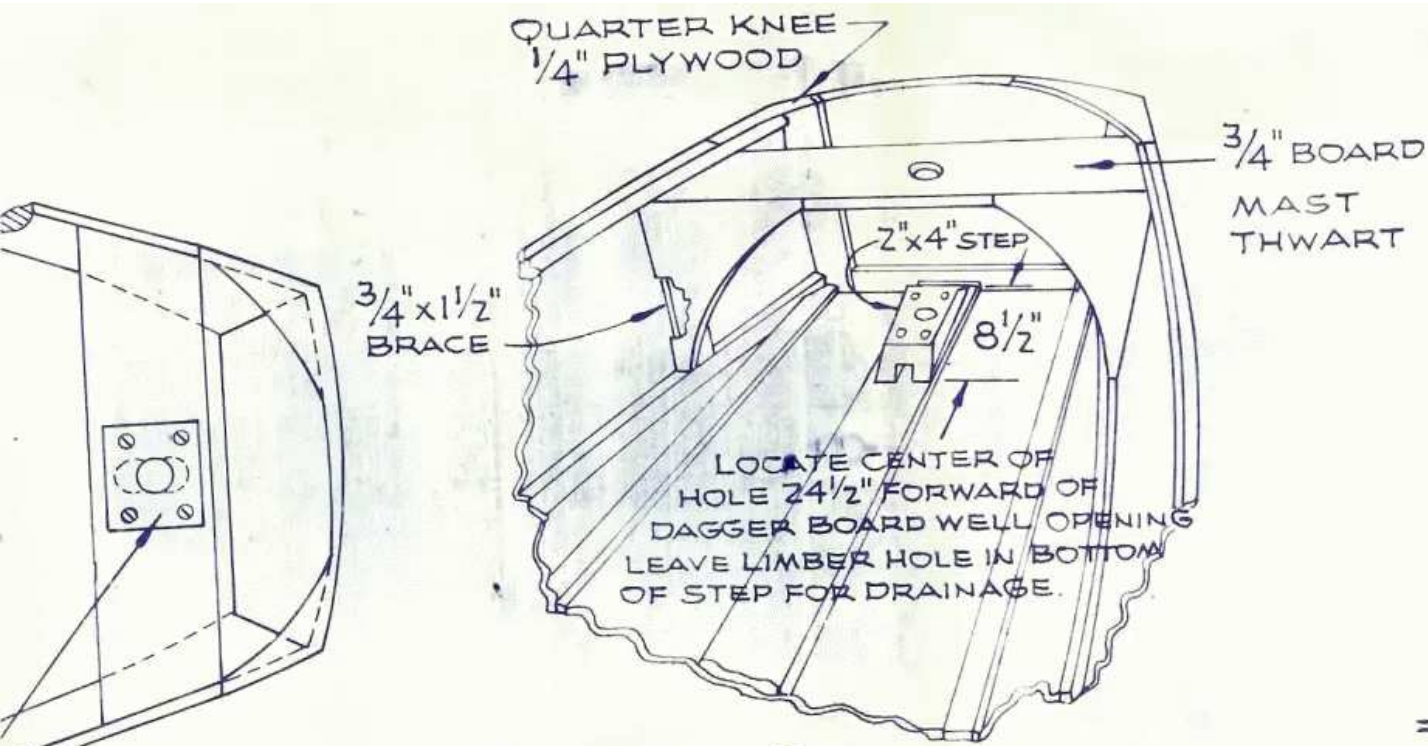


FIG. 13  
SIDE VIEW



SKETCH E

MAST THWART, MAST STEP  
AND QUARTER KNEE DETAIL.

THWART MAY HAVE  
EXTRA BLOCK ON TOP  
FOR MAST RAKE  
ADJUSTMENT, BUT  
MUST NOT BE ADJUSTABLE  
UNDER WAY.

POINT JUST AFT  
OF WELL

1" MAX.

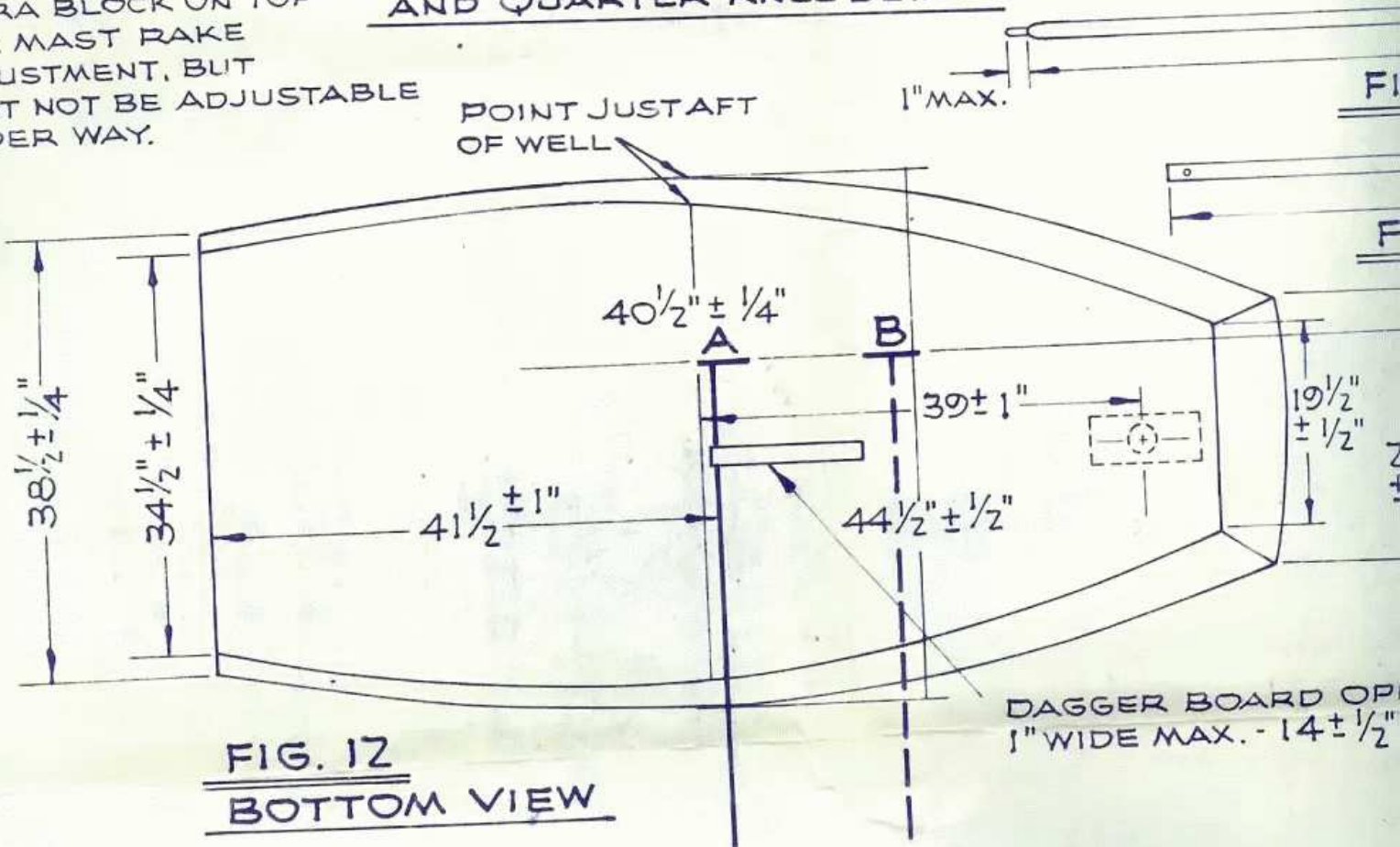
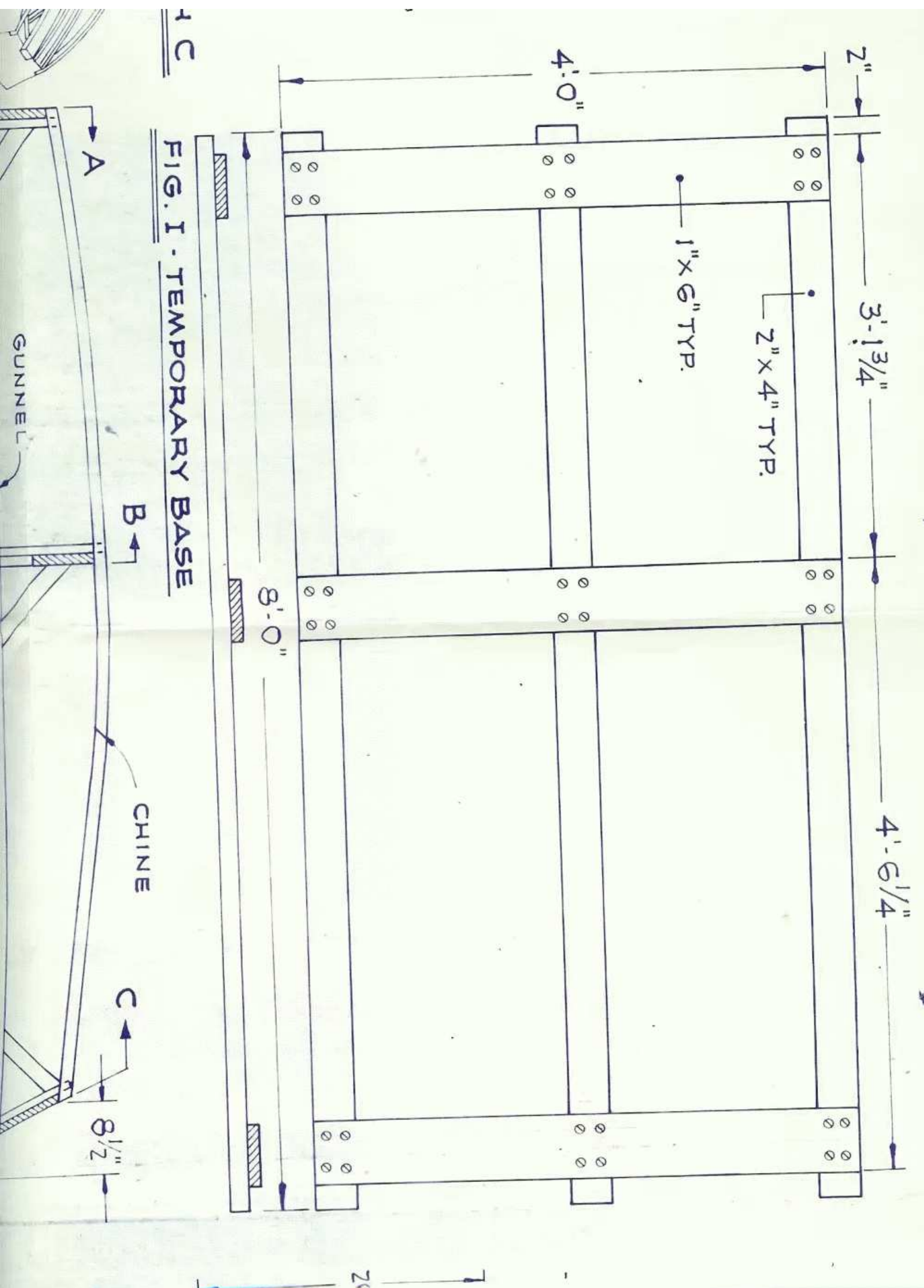


FIG. 12  
BOTTOM VIEW



1 C  
 FIG. I - TEMPORARY BASE

2"

3'-1 3/4"

4'-6 1/4"

4'-0"

1" x 6" TYP.

2" x 4" TYP.

8'-0"

A

B

CHINE

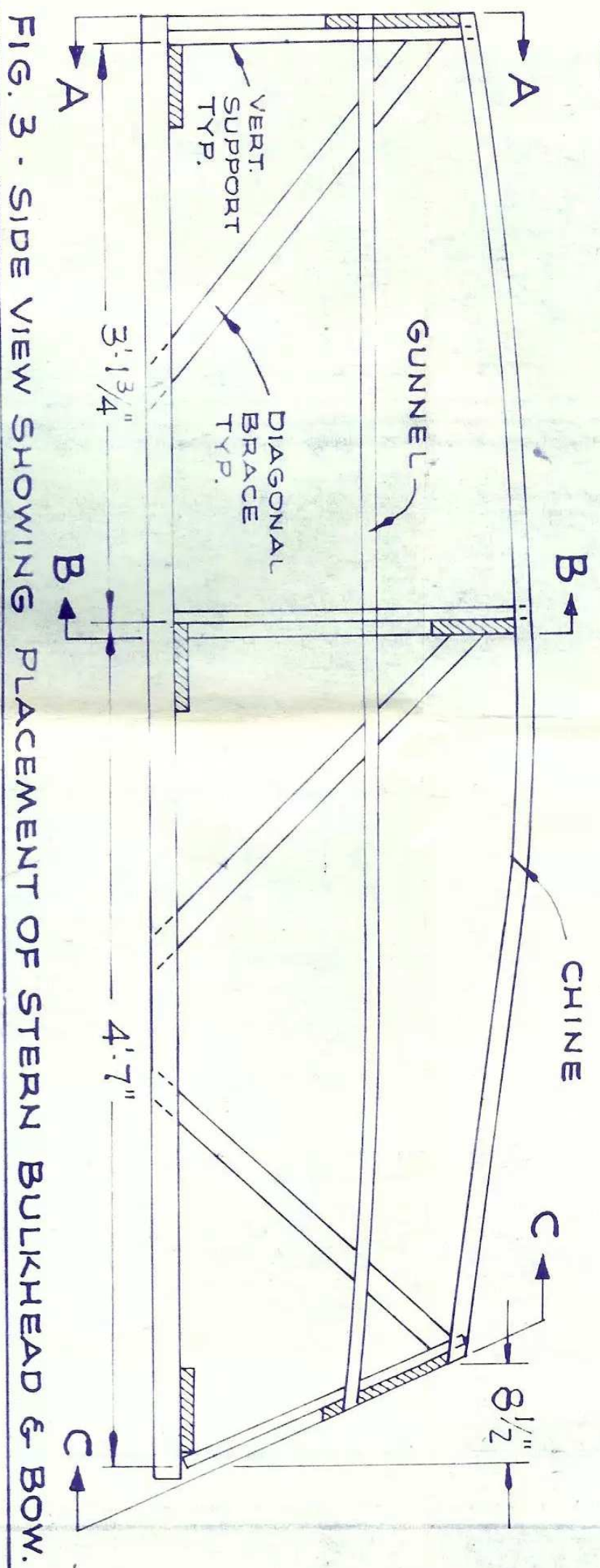
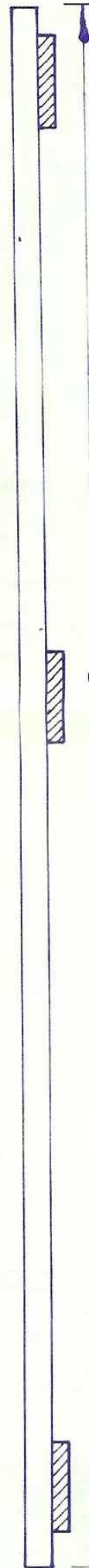
C

8 1/2"

GUNNEL

2"

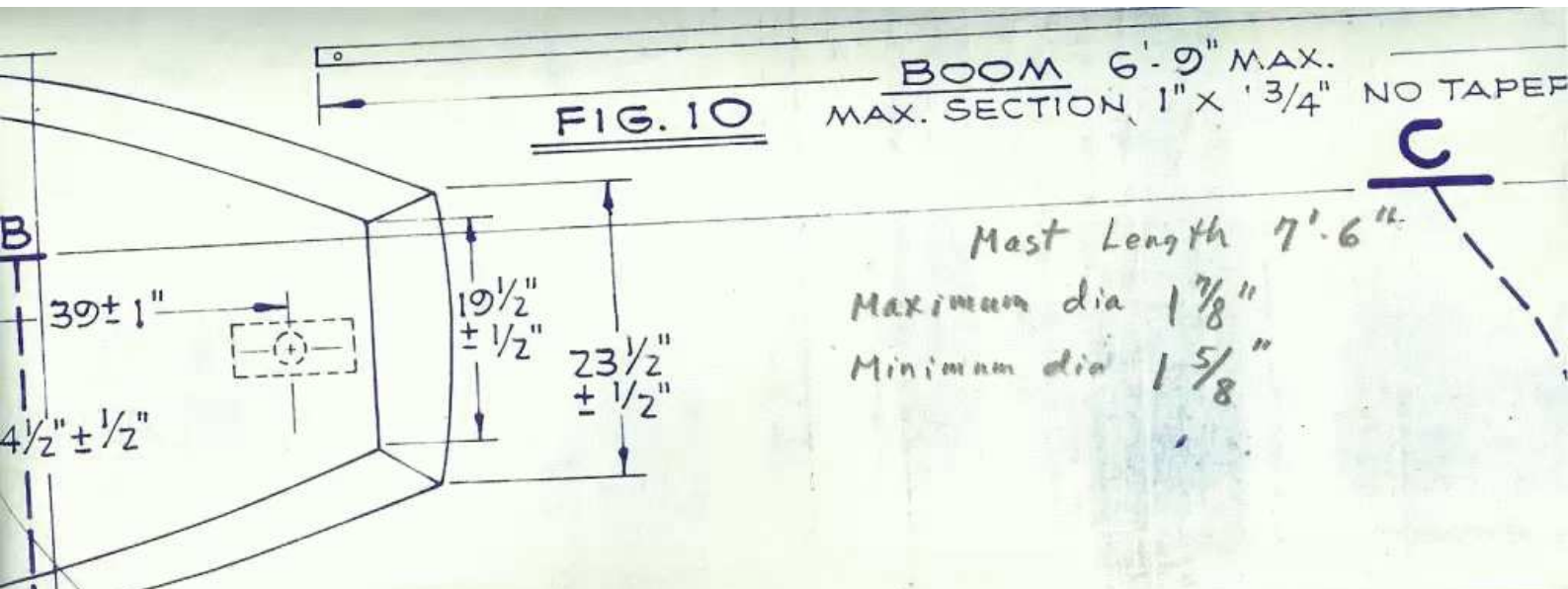
**FIG. I - TEMPORARY BASE**



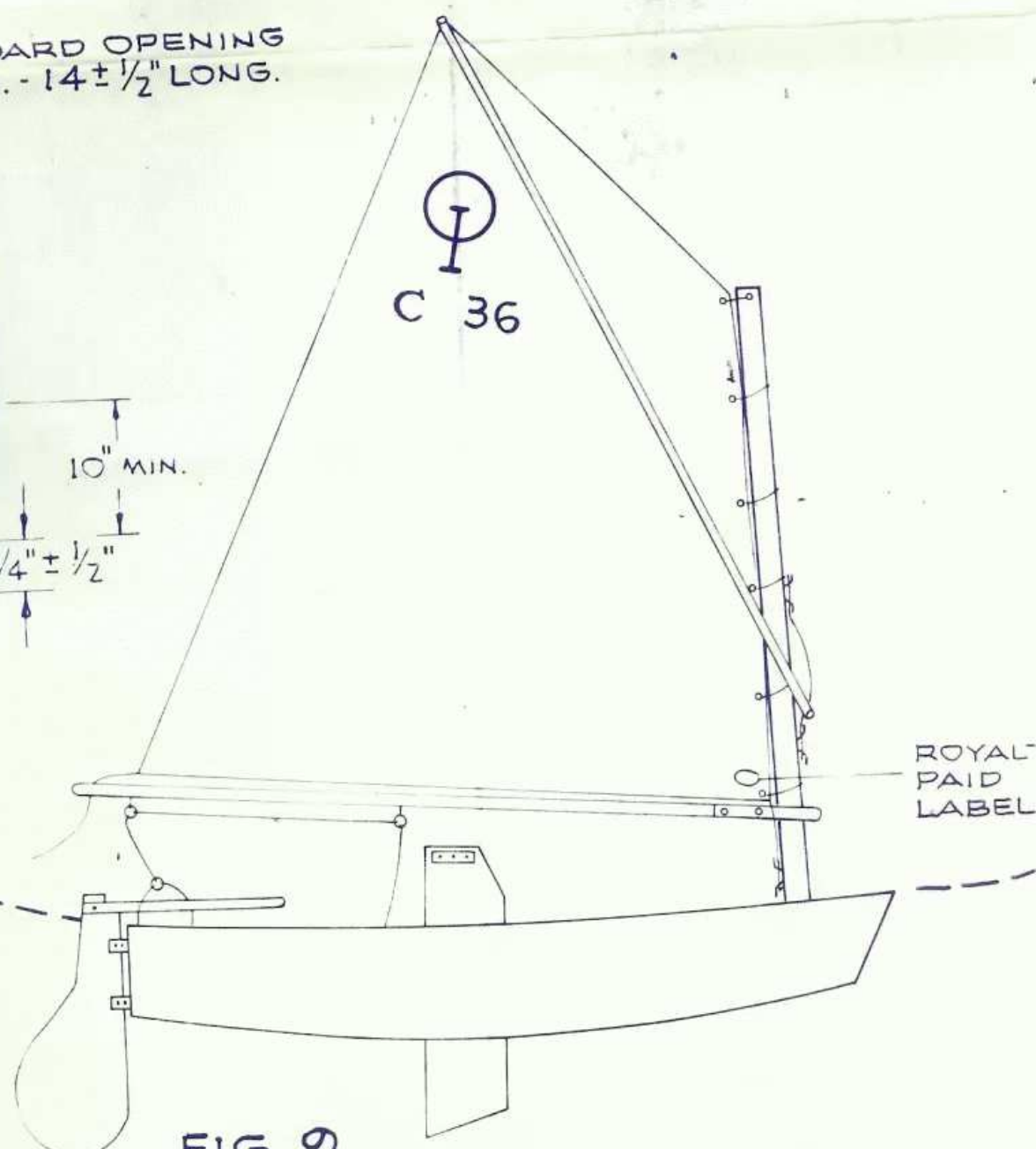
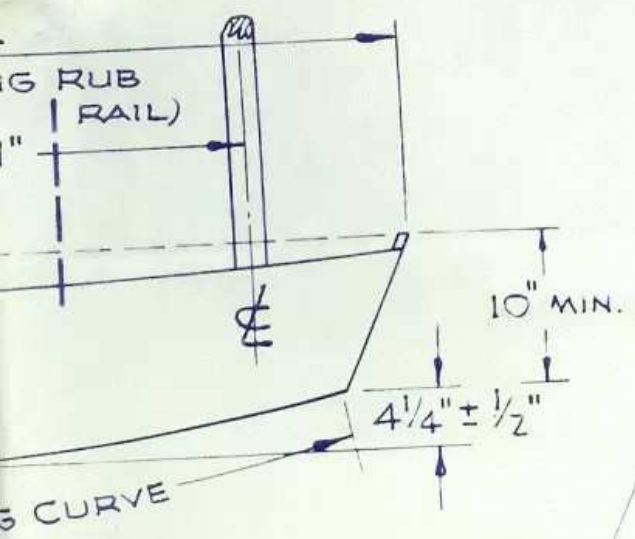
**FIG. 3 - SIDE VIEW SHOWING PLACEMENT OF STERN BULKHEAD & BOW.**

GUNNEL

11"



DAGGER BOARD OPENING  
1" WIDE MAX. - 14 ± 1/2" LONG.



**FIG. 9**  
**ASSEMBLED PRAM**

BOARD OPENING  
K. -  $14 \pm \frac{1}{2}$ " LONG.

  
C 36

$10$ " MIN.

$\frac{1}{4}$ "  $\pm$   $\frac{1}{2}$ "

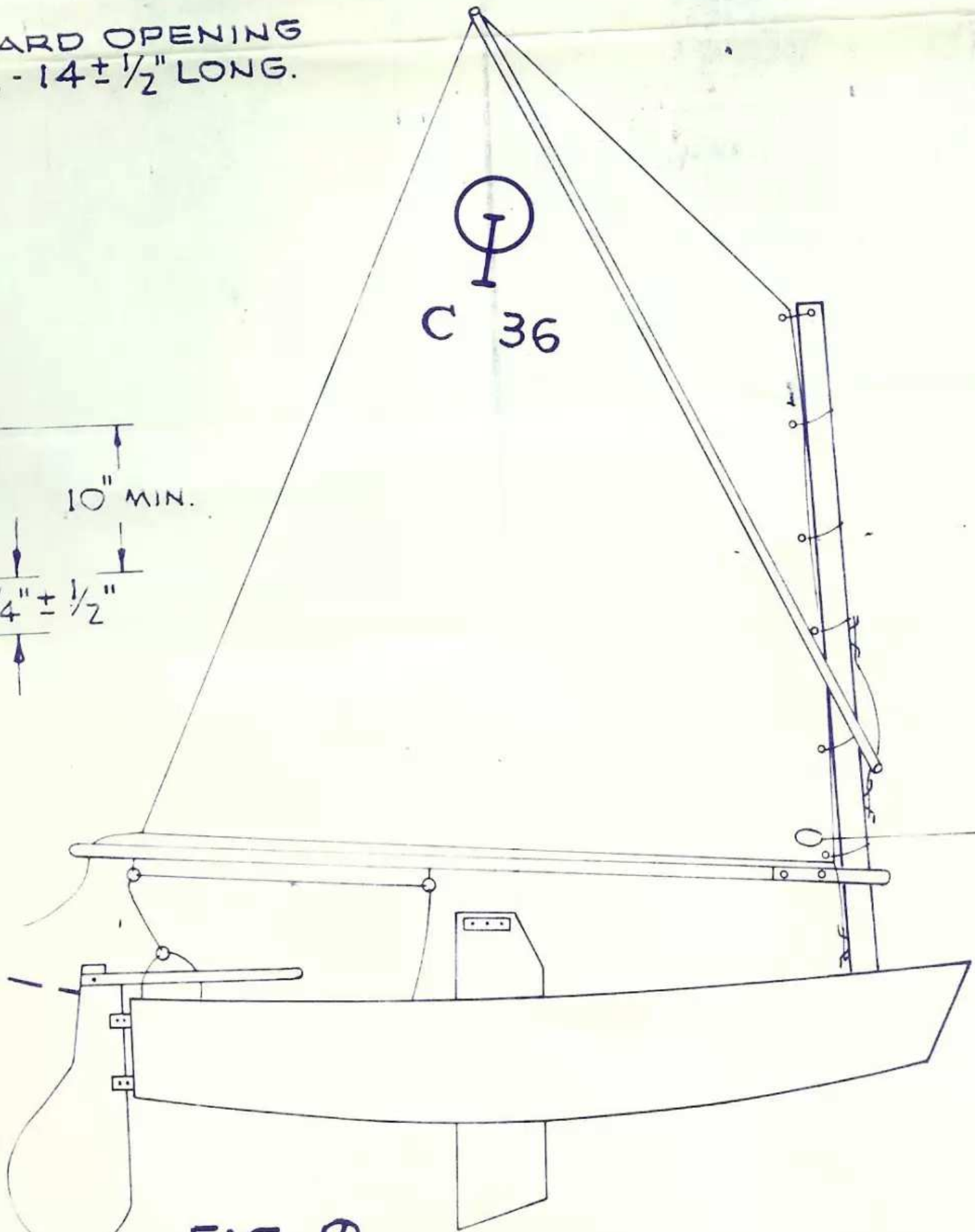
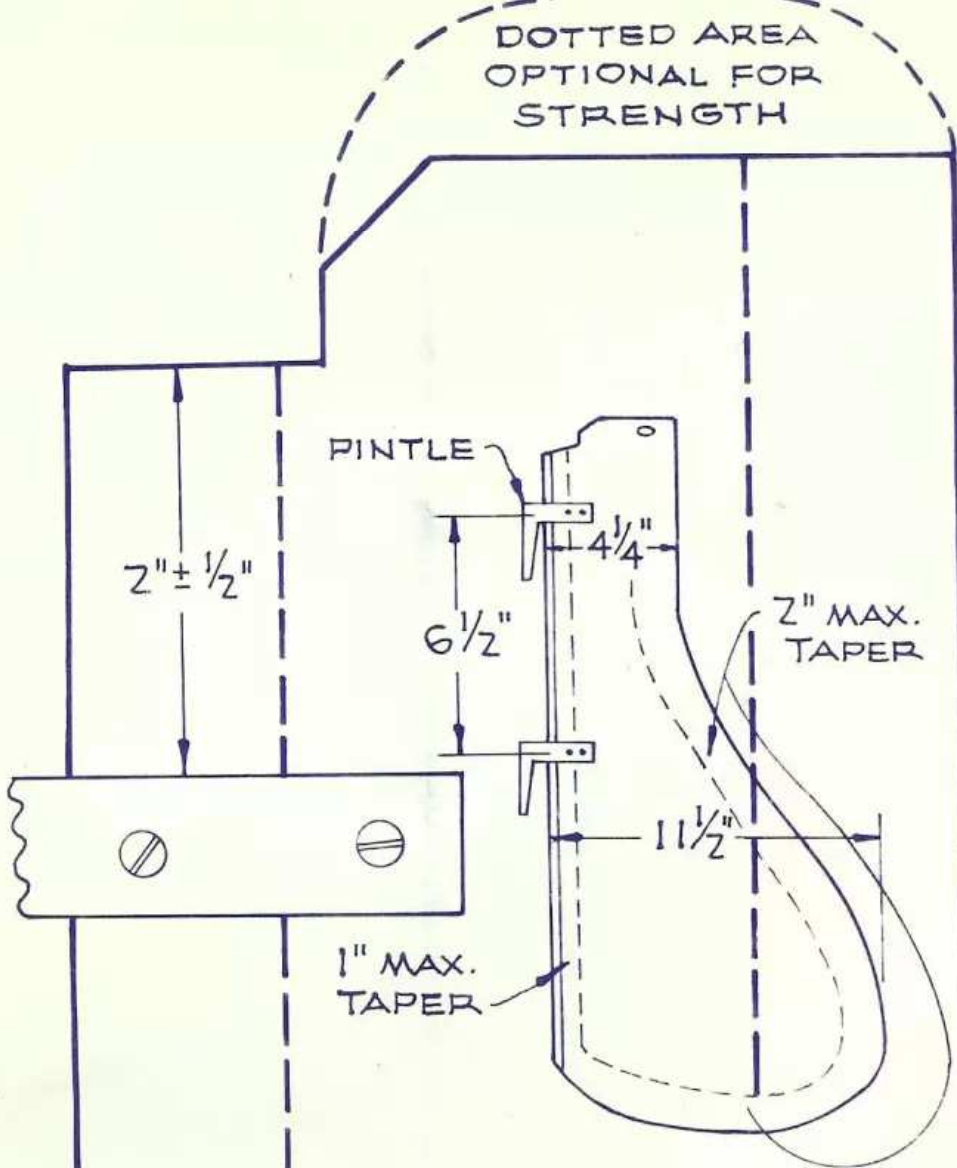
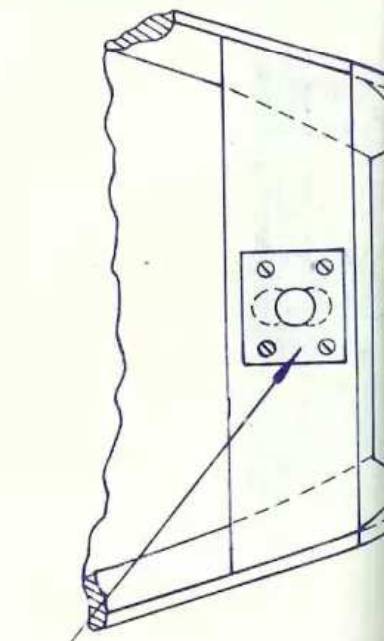


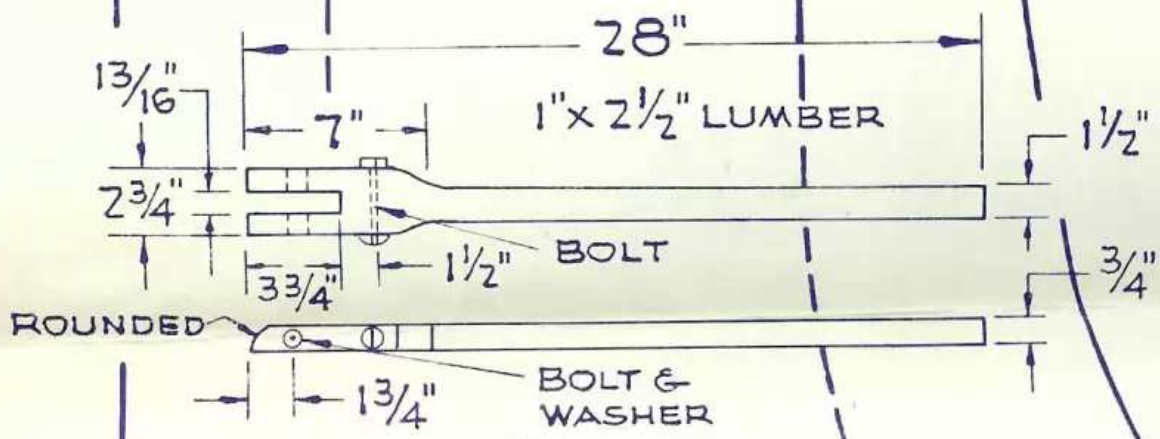
FIG. 9



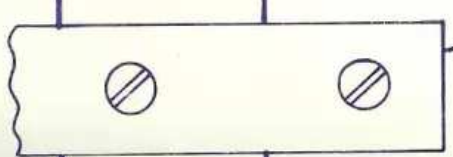
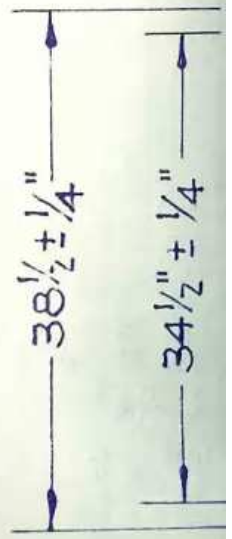
**FIG. 6 - RUDDER**



THWART MAY  
EXTRA BLOCK  
FOR MOST RA  
ADJUSTMENT,  
MUST NOT BE A  
UNDER WAY.



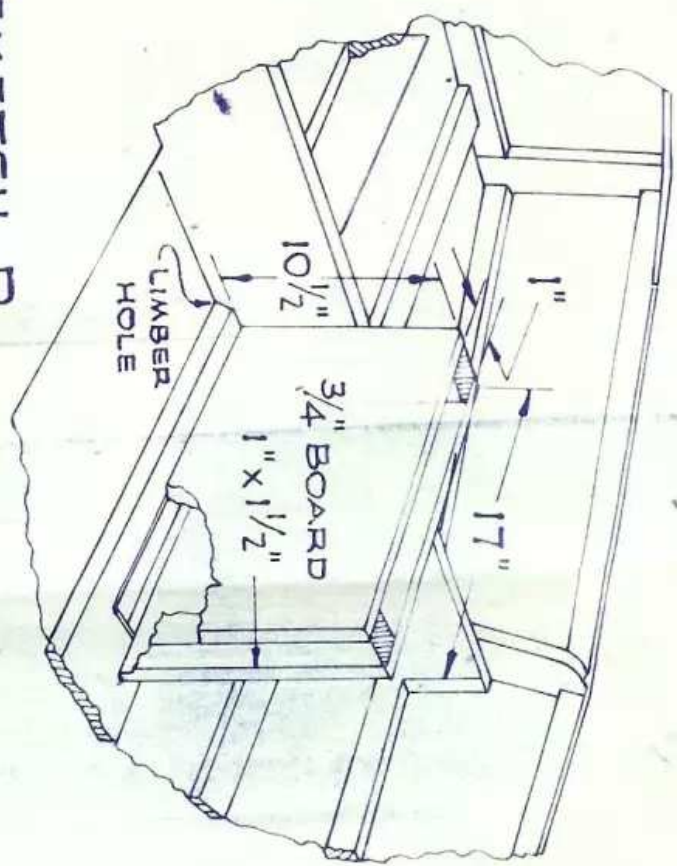
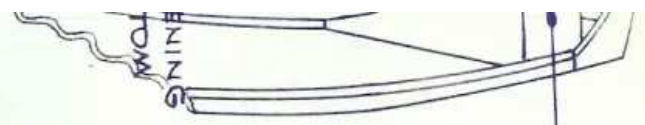
**FIG. 8 TILLER**



LOCATION  
OF THIS  
PINTLE  
OPTIONAL.

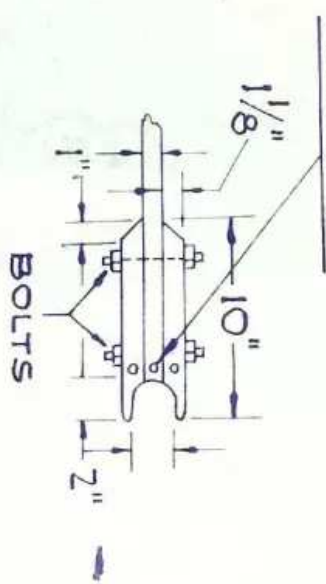


3/4" BOARD  
MAST  
THWART



SKETCH D  
DAGGER-BOARD WELL DETAIL

3 HOLES FOR  
LASHING



SKETCH F  
BOOMJAW DETAIL (OPTIONAL)  
OR BANDSAW SIMILAR SHAPE  
AS SHOWN IN FIGURE 10.

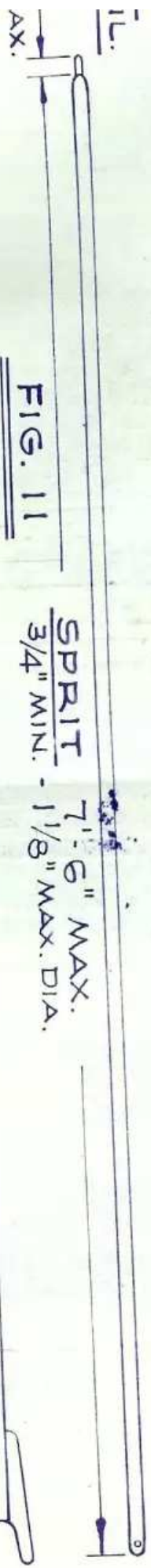
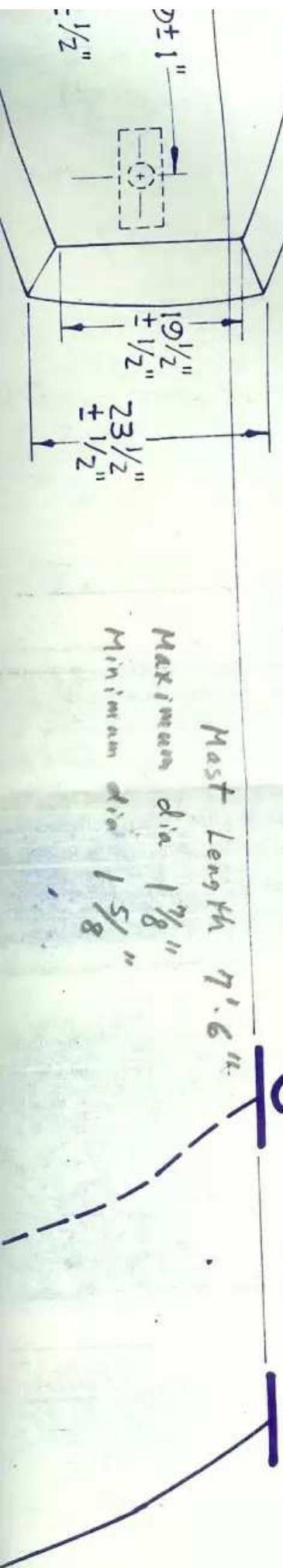
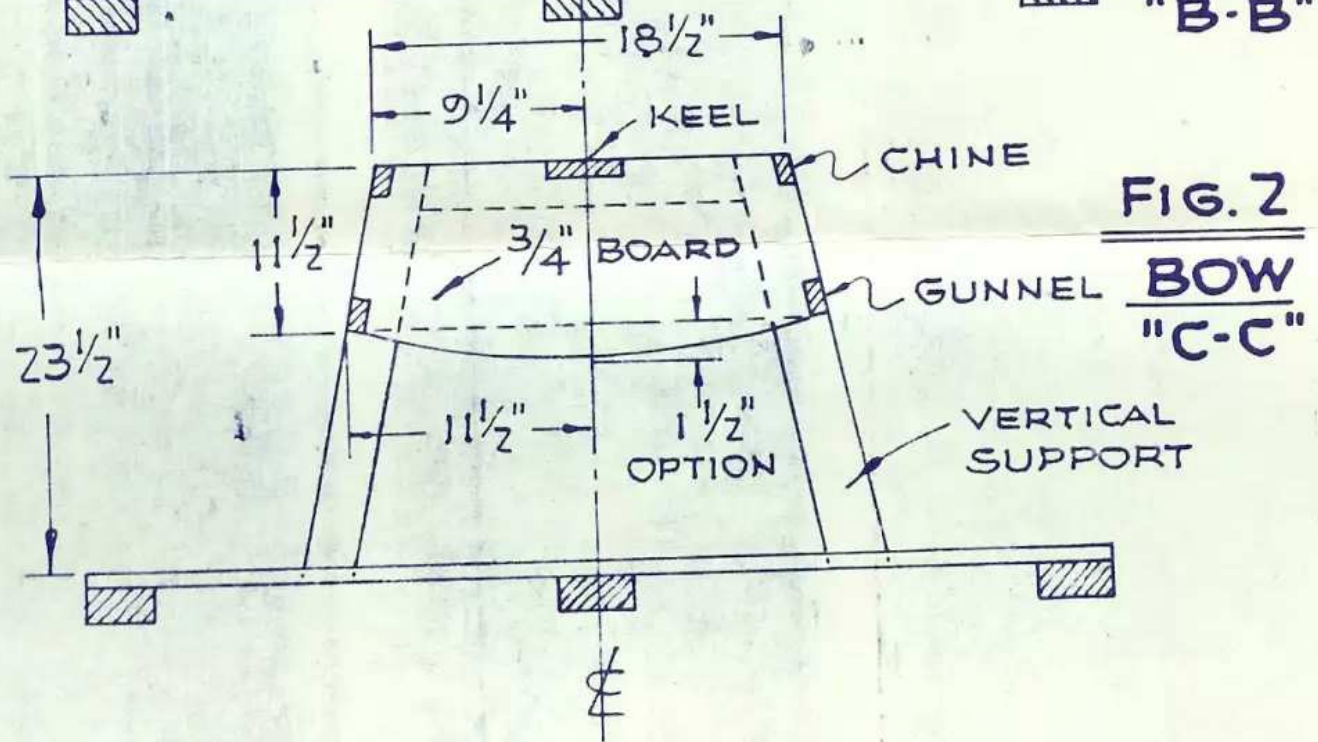
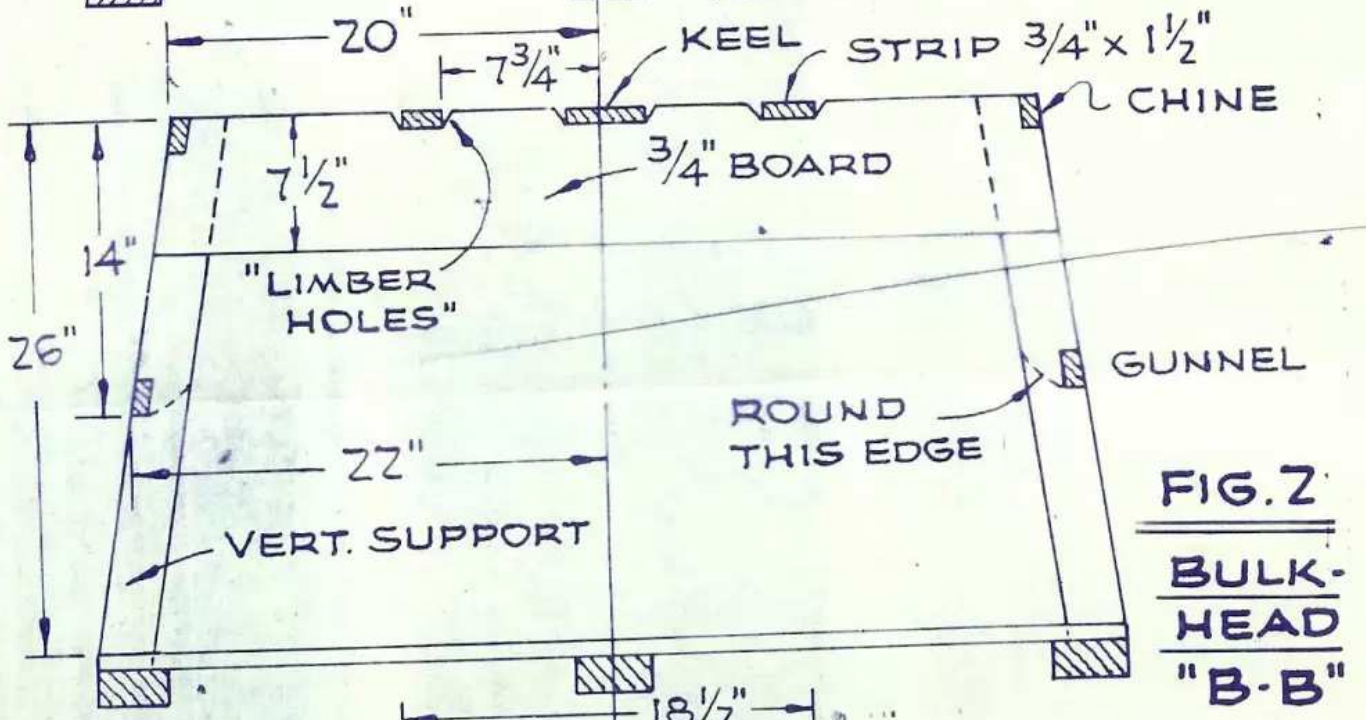
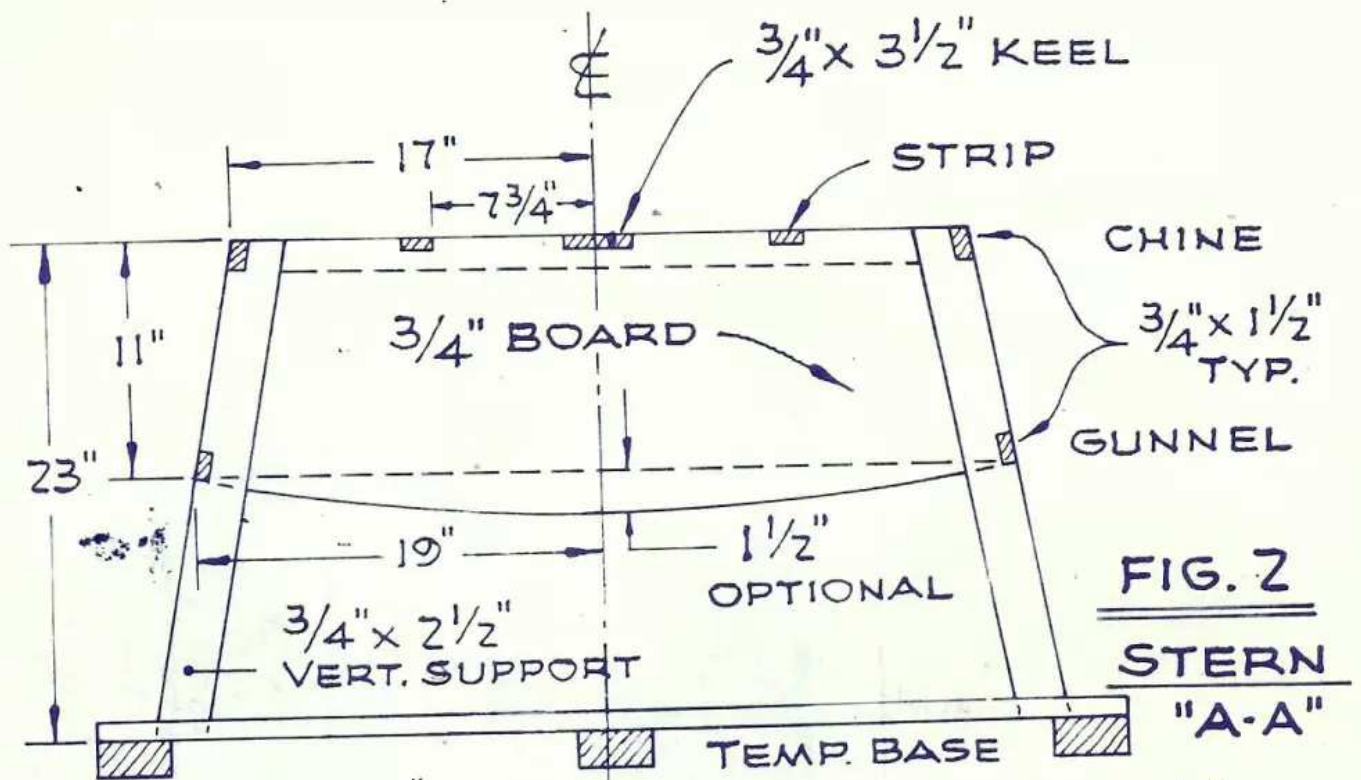


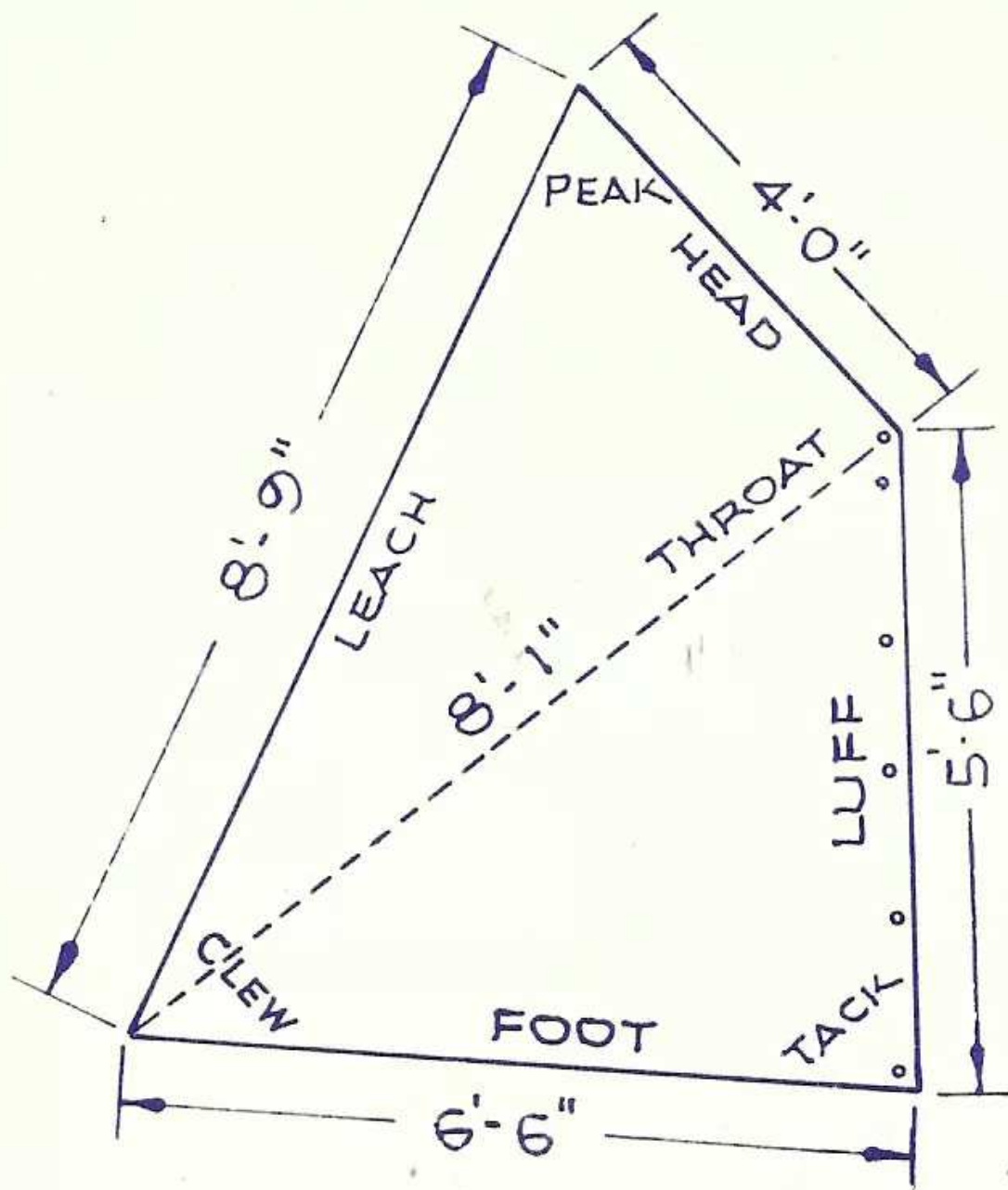
FIG. 11

FIG. 10  
BOOM 6' 9" MAX.  
MAX. SECTION 1" X 3/4"  
NO TAPER ALLOWED.



Mast Length 7' 6"  
Maximum dia 1 7/8"  
Minimum dia 1 5/8"





## SAIL

REFER TO PARAGRAPH IV C  
FOR EXACT SAIL REQUIREMENTS.

# OPTIMIST CLASS PRAM

DESIGNED FOR THE OPTIMIST CLUB  
OF CLEARWATER BY CLARK MILLS.  
COPYRIGHTED 1948 - ALL RIGHTS  
RESERVED.

WRITE TO:

OPTIMIST CLUB OF CLEARWATER

BOX 1031

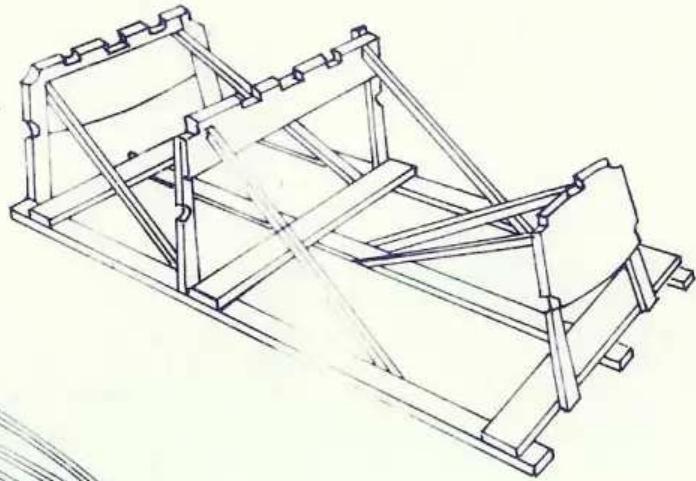
CLEARWATER, FLORIDA, 33517, U.S.A.

FOR ADDITIONAL PLANS.

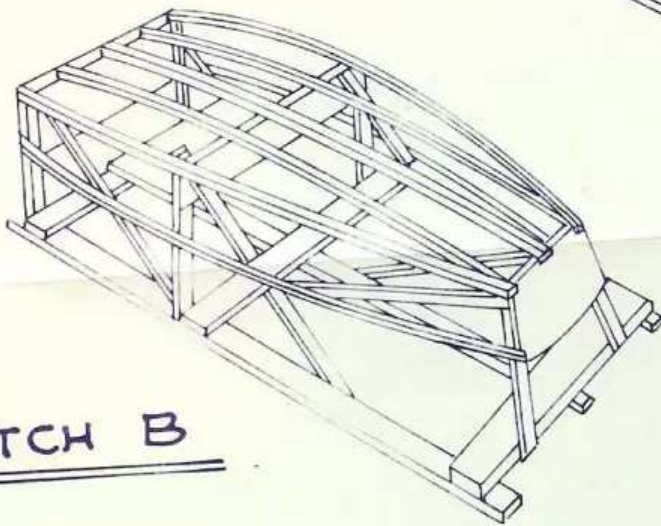
1948 3-17-66 PD 10-72 RN 8-20-75 HAL



SKETCH A



SKETCH B



SKETCH C

